

**98 0N SUZUKI JIMNY COMBO BAR  
PETROL MODELS.**

**PRODUCT NUMBER**  
**3424030**

**FITTING KIT NUMBER**  
**6171381**

**WARNING**

**FOR VEHICLES EQUIPPED WITH SRS AIRBAG**  
**WHEN INSTALLED IN ACCORDANCE WITH THESE INSTRUCTIONS, THE FRONT PROTECTION BAR DOES NOT AFFECT OPERATION OF THE SRS AIRBAG.**

**TAKE NOTE OF THE FOLLOWING:**

- **THIS PRODUCT MUST BE INSTALLED EXACTLY AS PER THESE INSTRUCTIONS USING ONLY THE HARDWARE SUPPLIED.**
- **DO NOT USE THIS PRODUCT FOR ANY VEHICLE MAKE OR MODEL, OTHER THAN THOSE SPECIFIED BY ARB.**
- **DO NOT REMOVE LABELS FROM THIS BULL BAR.**
- **THIS PRODUCT OR ITS FIXING MUST NOT BE MODIFIED IN ANY WAY.**

USE	PART No	QTY	DESCRIPTION
MOUNTING BRACKETS TO CHASSIS RAILS	6151094	2	BOLT M12 X 30 mm
	6151096	1	BOLT M12 X 40 mm
	6151135	2	NUT M12
	4581050	2	WASHER SPRING ½"
	4581049	2	WASHER FLAT ½"
	4581008	2	WASHER FLAT OFFSET 40mm X 12mm
	6151045	4	BOLT M10 X 25mm
	4581040	4	WASHER FLAT M10
	4581048	4	WASHER SPRING M10
	3193656 L/R	2	CAPTIVE NUT PLATES
	6151022	4	BOLT M8 X 25mm
	4581063	4	WASHER FLAT M8
	6151132	4	NUT FLANGE M8
	5846280	1	SPACER TUBE 17 mm X 14 mm
	TO BOLT BAR TO CHASSIS BRACKETS	6151045	6
4581040		8	WASHER FLAT M10
4581048		6	WASHER SPRING M10
6151302		4	NUT CAGE M10
6151026		2	NUT M10 x 1.5
NUMBER PLATE BRACKET	6151017	4	BOLT M6 x 16mm
	6151046	4	WASHER FLAT M6
	6151128	4	NUT FLANGE M6
	3751451	1	NUMBER PLATE BRACKET
CONTROL BOX BRACKET	6151021	2	BOLT M8 X 20mm
	4581044	2	WASHER FLAT M8
	3751564	1	CONTROL BOX BRACKET
	6151132	2	NUT FLANGE M8
5- 6000lb WINCH TO PAN	4581040	4	WASHER FLAT 3/8" X 1"
	180302	6	CABLE TIES
INDICATORS	3500080	1	ARB INDICATORS

---

### TOOLS REQUIRED

---

1 BASIC TOOL KIT, DRILL 10mm DRILL BIT.

## ASSEMBLY SEQUENCE FOR BULL BAR INSTALLATION.



1. Fit control box bracket to bar using 8mm hardware.
2. Fit number plate bracket to bar using 6mm hardware.



3. To place the clutch handle in the correct position, the winch gearbox must be rotated 72 degrees (2 hole spacings) in a clockwise direction when viewed from gearbox end. Place the winch on its end and remove all gearbox bolts. Gently raise the gearbox just enough to rotate it. When the correct position is located, refit all bolts and tighten.

**NOTE: Take care not to lift the assembly more than a couple of millimeters while rotating to correct position to avoid unmeshing the gears.**



4. Once winch is rotated, position winch on bench face up.
5. Lower bull bar on top of winch and align holes with each other.
6. Place roller fairlead in bar cutout over lower holes and fasten using 3/8" Warn hardware and 4 3/8" flat washers supplied in bolt kit.
7. To tighten bolts that hold roller fairlead to bar, remove vertical rollers using circlip pliers.
8. When all is positioned, tighten all bolts firmly.



9. Fit control box to control box bracket and tighten firmly.
10. Pull wires through viewer cutout under control box and wire up as per Warn instruction manual.

11. Tie back cables clear of all moving parts with cable tie supplied.

12. Place ground earth lead under bolt of winch tension bar.



13. Remove bumper bar from vehicle.
14. Fit chassis brackets to vehicle using G clamp to hold in place. On 05 onwards vehicles one chassis bracket is to sit on inside edge of solid bar tie down point. Install M10 cage nuts on inside surface of mounts. 2 per side.



15. With one hand, fit 8mm flange nut inside front opening of chassis and secure using 8mm bolt and large 8mm flat washer.
16. Carry out this procedure to both sides of the vehicle.

**NOTE: 05 ONWARDS VEHICLES HAVE A SLIGHTLY DIFFERENT FRONT CHASSIS BRACKET AND DRILLING OF ONE OR MORE OF THE FRONT HOLES MAY BE REQUIRED.**

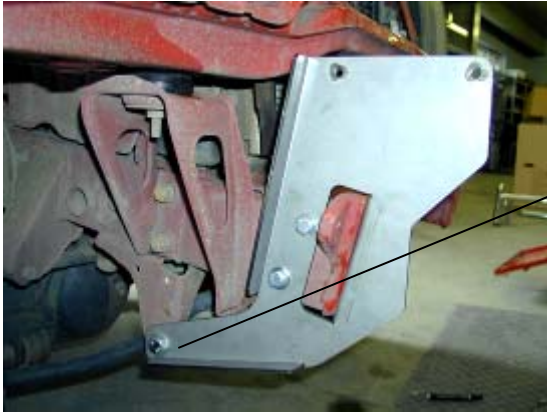


17. Using 10mm holes in the side of chassis bracket as a template, drill out through one side of chassis using 10mm drill bit.

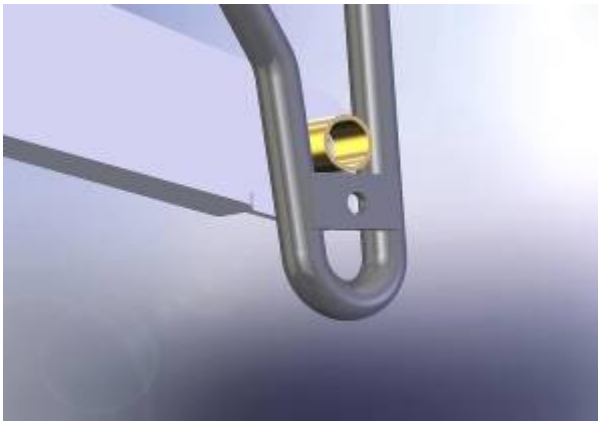


18. Once holes have been drilled, insert captive nut plates inside of chassis and fasten using 10mm hardware. Pre 05 model shown.
19. On 05 on vehicles bend captive nut plate to shape and insert through gap in side of front chassis rail.

Viewed from LHS



20. Fit 12mm hardware to where indicated in photo, making sure to use large 40mm x 12mm offset washer to cover hole on inside of rear mount. Pre 05 model shown.



21. On 05 onwards vehicles place spacer tube in tie down point as shown. Secure using M12 X 40 mm bolt, spring washer, off-set washer and nut placing the off-set washer on outside surface against tie down.



22. Before fitting bar to vehicle, cut plastic inner guard to approximately the top line of masking tape in photo on left. Alternatively the inner guard can be removed totally.



23. Lift bar into position on outside of chassis brackets and bolt up using M10 x 25mm bolts, spring and flat washers. Finger tighten only.  
24. Adjust bar so that there is a 15mm gap around the periphery of the vehicle and securely tighten all remaining bolts throughout.  
25. Drill out remaining locking bolt hole using 10mm drill bit, and fasten using 10mm hardware.



26. Fit number plate to bar using 6mm hardware.
27. Fit indicators into bar.
28. Connect the indicator looms to the existing loom with the Scotchloks supplied. Test to ensure the indicators function correctly.