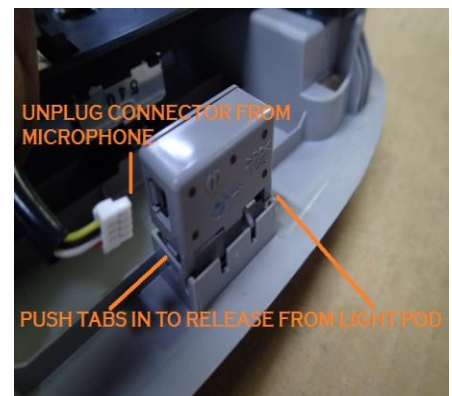


**INSTALLATION OF 'OUTBACK' ROOF CONSOLE:**

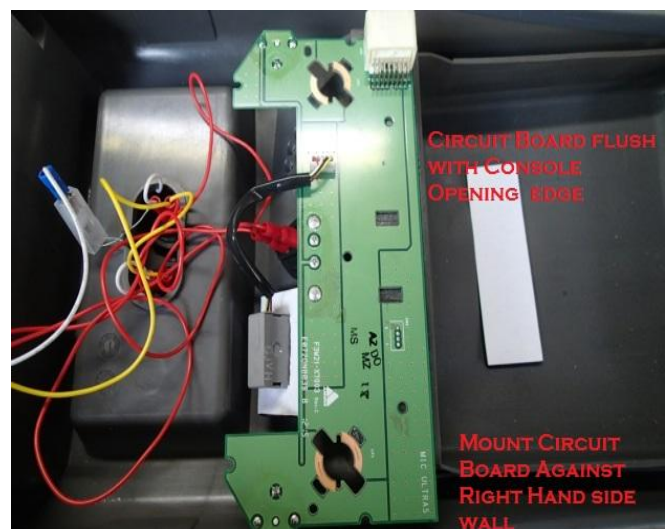
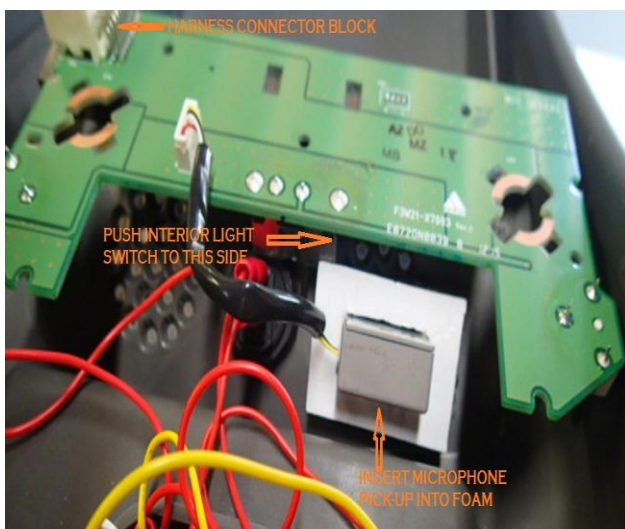
**PART NUMBER RCH115**

**Installation of Hilux 2015..on \*Bluetooth Connectivity to Console body**

Remove Factory fitted light pod from roof. To do this, push fingers between Light Pod assembly and roof lining in the centre on the rearwards edge. Gently pull down assembly until Pod has unclipped. Repeat process on the front centre of Pod, and Pod will detach from roof cavity. Ensure the 4 x RED trim plugs are removed with the Pod assembly. Unplug the vehicle wiring connector block from the Light Pod Assembly. On a soft protected surface, unclip small connector Block from Bluetooth Microphone. Remove the seven (7) screws holding the Backing Cover and Printed circuit board to Pod. Remove circuit board and backing cover. Carefully prise out Bluetooth 'Microphone Pick-Up' from Pod. Half twist and remove light globes from Circuit board. Put Light Pod, backing cover, 2 x globes and 7 x screws aside in a safe place for vehicle refit back to original if required.



**Bluetooth Circuit Board attachment to console:** Switch Light Pod 'ON/OFF' lever switch on underside of circuit board in the away → direction from connector block. This will leave the front lighting circuit in the OFF position. Place console body on a soft protective surface, and peel off top strip from double sided tape on top of radio opening and press circuit board firmly onto sticky surface with the connector block facing up and to the left hand side of console. Insert Bluetooth Microphone into foam rubber slot situated over console speaker grille. Reconnect Microphone wiring plug.



***Failure to connect coloured wiring correctly and tape up all connections as described in the following instructions could result in an electrical short and void console warranty.***

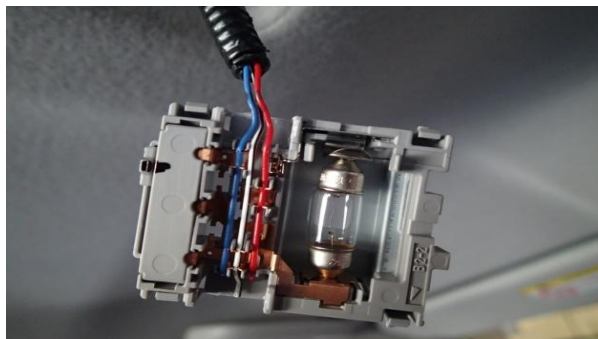
For this installation you will need a **long** Phillips screwdriver, **short** 'stumpy' Phillips screwdriver, small flat blade screwdriver, small knife or sharp blade, 3.2mm 'stub' drill bit, electric or Battery drill, 'Loc-Tite' and electrical insulation tape. All fixing plates, brackets, fixing screws supplied in fitting kit.

***VEHICLE PREPARATION:***

**Front Mounting Bracket Installation:** Insert the two (2) square plastic grommets supplied in kit into vacant Light Pod holes at 152mm centres. Screw Front Mount Bracket into the two (2) plastic grommets with 10# x 12mm self tappers.



**Centre Interior light removal:** Prise off clear lens cover with small flat blade screwdriver or knife. Using the same implement, push the two large diagonally positioned plastic Tabs inwards to release Light assembly from roof lining. To release Wiring Block from Light assembly, push long tab situated at base of the assembly inwards to release wiring block. Remove top cover on wiring block to expose the Interior light wires, and carefully remove each wire from the 'V' grooves. Put interior light assembly aside in safe place for vehicle refit back to original if required.

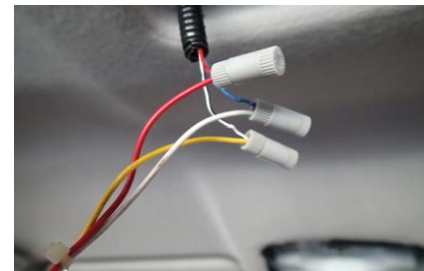


**Rear Mounting Plate Installation:** Using the drilling template supplied in the kit, hold template in the Interior light cavity and mark the four (4) holes. **With 20mm maximum of drill bit exposed from chuck,** drill four(4) 3.2mm holes into roof stiffening rib. Place rear mount plate with 20mm spacer blocks attached over the holes and using a **hand held Phillips** screwdriver, fasten the Rear Mount Plate to drilled holes with 8# x 30 self tapper screws ensuring captive nuts are to **rear** of vehicle and facing down.



**Installation Preparation:** \*Connect each wire **one at a time**

**Step 1:** strip off approx 10mm insulated coating from vehicle wire, and twist together with console wiring extension supplied. Twist **Red** to **Red** first. **Step 2:** Place threaded portion of grey Posi-twist™ connector over the two joined wires, then screw the main body on tight to crimp wires together. **Step 3:** Repeat steps 1 and 2 for **White** to **Blue** and **Yellow** to **White** wires.



Use 'Blu-Tack' supplied to adhere one of the 6mm x 30mm round head bolts to **long Phillips screw driver** and put a small amount of 'Loc-Tite' on thread then store in convenient location, e.g. on seat of vehicle or in/on centre console.

**Comfortable work position:** Slide seats all way back, if right handed - sit in passenger seat, if left handed - sit in driver seat. A second person is recommended to make installation easier.

**CONSOLE INSTALLATION:**

Stand console upright on front seat and plug console wiring loom into interior light/extension Loom of vehicle. Plug **red** to **red**, **white** to **white** and **yellow** to **yellow**. Check that console lights work independently once doors are shut and timer switches off (approx 25 seconds), **then tape up to ensure wires do not become disconnected.**

Hold console up, across the width of the cab and insert the front connector harness into the circuit board block adhered to console body. Turn console body 90°, and position **over Front Mounting Bracket** ensuring mounting bracket fits into gap between front of console and rear of radio surround/storage tray. Look up under rear mounting hole; line up captive nuts in Rear Fixing Plate with slotted fastening holes, tuck wiring loom down the side out of way so as not to jam between console body and Rear Fixing Plate. **Loosely** fasten console up to one of the captive nuts in Rear Mounting Plate using the 6mm x 30mm round Phillips head bolt 'Blu-Tacked' to Phillips screw driver.



**Finger** fasten front of console to Front Mounting Bracket using the two 6mm x 16mm **black** Phillips head bolts supplied, to do this, push up console until holes line up with captive nuts on front bracket. Tighten bolts up using **short** Phillips screwdriver.

Blu-Tack other 6mm x 30mm round Phillips head bolt onto screw driver, apply 'Loc-Tite' and fasten into Rear Fixing Plate; tighten bolts. **NOTE:** *Only tighten rear bolts up firm so console is held to roof. **DO NOT** tighten so as to bend rear mounting plate downwards; do rear bolts up with equal tension.*

Open Locker Box and remove Microphone Cable Holder and Rear Mounting Hole Cover from inside. Fasten Hole Cover in place using screws supplied. Fasten Microphone Cable Holder in a convenient location (as per radio installation instructions attached). Ensure microphone position does not foul on sun visor when visor pulled downwards

There is an on/off switch located above the radio opening, in front of the forward lights; when **OFF** it acts as a kill switch and no lights will work. When **ON** lights work independently as map/interior lights when doors are shut and timer switches off. When doors are opened lights will work as door/interior lights.

## **Fit Kit: RCHI15:**

- One (1) Front Mounting Bracket
- One (1) Drilling template
- One (1) Rear Fixing Plate
- Four (4) 20mm round plastic spacers
- Three (3) Console wiring Posi-twist™ connection terminals
- One (1) Wiring Extension
- Four (4) 8# x 30mm Phillips self tapping screws
- Two (2) 10# x 12mm Phillips self tapping screws
- Two (2) 6mm x 30 mm Phillips round head bolts
- Two (2) 6mm x 16mm **black** Phillips round head bolts
- Two (2) square plastic screw grommets
- One (1) Piece of 'Blu-Tak'
- Three (3) 100mm pieces sticky back foam ( radio installation )

# RADIO INSTALLATION

**Radio Insert Installation: for smaller size radios**  
**PLEASE NOTE: Radio Insert NOT INCLUDED**

Decorative side of insert faces outside and snaps out over bottom of tray surround.

To install insert, squeeze top and bottom together; push/bend sides and squeeze into tray surround from inside to outside until bottom lip on decorative side of insert snaps/pops out over bottom of tray surround, prize with fingers to ensure bottom lip of insert is in place over tray surround as described.

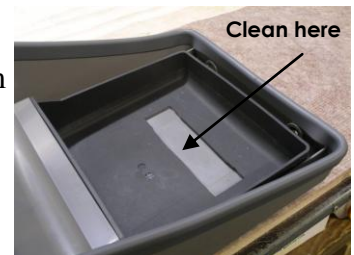
**Do not** scratch or mark insert or surround by prizing/levering with tools; use hands/fingers only.



## Radio Installation:

Place protective cover on work bench to avoid scratching console.

Place console on protective cover and using a sharp knife cut a 30mm x 100mm section out of storage tray 25mm in from where rear of radio will be when installed. Use a small amount of methylated spirits to a clean cloth to clean exposed part of console and bottom rear of radio.



Peel one side of protective backing from strip of foam supplied; apply pressure with palm of hand to adhere foam to exposed part of console. Peel other side of backing off one or more strips of foam and apply to first for different size radios (see chart below) this will keep radio level with bottom of surround.



Insert radio on an angle until radio protrudes 15mm out over bottom of tray surround or insert and straighten; lay flat onto sticky back foam and apply firm pressure to top of radio with palm of hand for 30 seconds to ensure good adhesion.



## Sticky back foam chart:

One (1) strip- standard size radios

Two (2) strips- Icom and Uniden

Three (3) strips- GME Electrophone

## Microphone and Microphone Cable Holder installation:

Install in a position that suits best, depending on vehicle. Ensure microphone or microphone cable holder does not foul on sun visor when pulled down.



Install microphone clip on slight angle  
(same as console)



Install microphone clip on acute angle