

ARB AIR LOCKER *Air Operated Locking Differentials*

RD103 Dana 35,27 SPL,3.31 & DN

ITEM #	QTY	DESCRIPTION	PART #	NOTES
01	1	SPLINED SIDE GEAR	SEE NOTE	3
02	1	SPIDER BLOCK	070801	
03	1	LONG CROSS SHAFT	061302	
04	1	SIDE GEAR	SEE NOTE	3
05	2	SIDE GEAR THRUST WASHER	151011	
06	2	COUNTERSUNK SCREW	200213	
07	2	CROSS SHAFT RETAINING PIN	120601	
08	2	SEAL HOUSING O-RING	160235	1
09	1	SEAL HOUSING ASSEMBLY	081801	
10	2	SHIM KIT	SHK003	
*	2	MASTER SHIM	150325	
11	2	TAPERED ROLLER BEARING	160109	2
12	1	FLANGE CAP ASSEMBLY	028505	
13	1	BONDED SEAL	160701	
14	1	CLUTCH GEAR	050803	
15	8	RETURN SPRING	150107	
16	1	SHORT CROSS SHAFT	061402	
17	3	PINION GEAR	SEE NOTE	3
18	3	PINION THRUST WASHER	151112	
19	1	DIFFERENTIAL CASE	013105	
*	1	BULKHEAD FITTING KIT (O-RING TYPE)	170111	
*	1	PUSH-IN FITTING (5mm to 1/8" BSPP)	170201	
*	1	AIR LINE (5mm DIA X 6m LONG)	170301	
*	1	NIPPLE (1/8" to 1/8" BSPT)	170501	
*	1	SOLENOID VALVE (12V)	180103	
*	1	SWITCH	180209	
*	1	SWITCH COVER (REAR)	180211	
*	10	CABLE TIE	180301	
*	1	WARNING LABEL	210101	
*	1	BUMPER STICKER	210102	
*	1	OPERATION & SERVICE MANUAL	210200	
*	1	INSTALLATION GUIDE	2102103	

* Not illustrated in exploded view.

Specs:

Axle Spline	27 tooth, Ø29.5mm [1.16"]
Ratio Supported	3.31:1 & down
Ring Gear ID	120.7mm [4.75"]
Ring Gear OD	193mm [7.6"]
Ring Gear Bolts	8 bolts on Ø146mm [5.75"]
Ring Gear Torque	75Nm [55 ft-lb]
Backlash	0.15-0.25mm [0.006-0.010"]
Bearing Cap Torque	75Nm [55 ft-lb]

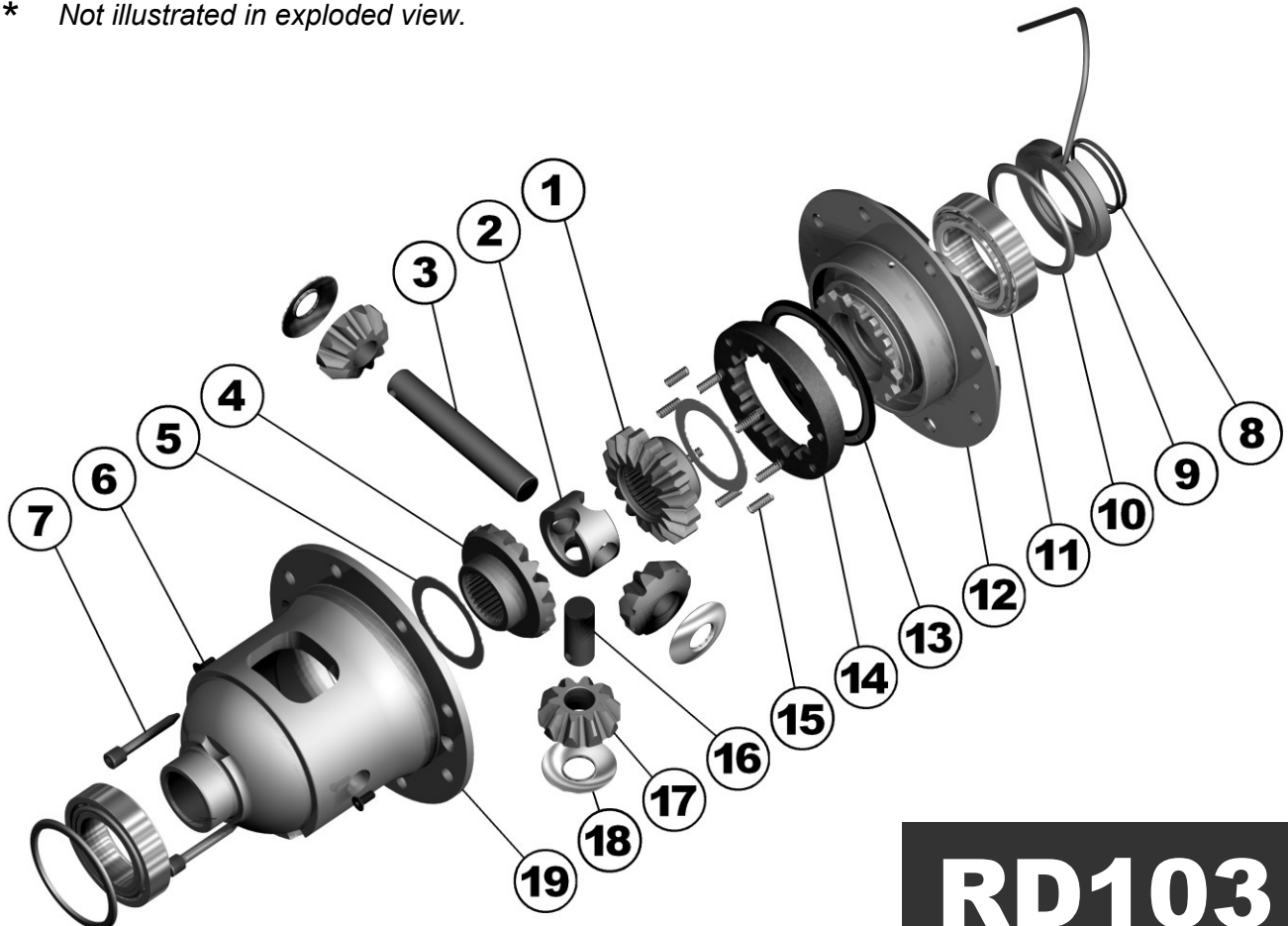
Notes:

- For replacement O-rings use only BS133 Viton 75.
- For replacement bearing use Timken part # LM102949 / LM102910.
- Available only as complete 5 gear set #728J011C

For ratios of 3.54:1 and up refer to RD102 (Section 2.102).

Newer OEM Dana 35 ring and pinion sets use 7/16" bolts. The flange holes of the Air Locker must be reamed from Ø3/8" to Ø7/16" to suit.

Some OEM Dana 35 drive pinion gears extend too far into the centre and converge with the differential carrier. Refer to ring and pinion modification note (Section 5.6) for correction.



RD103

