

**RD260**

Isuzu IFS,29 SPL

### PARTS LIST

| ITEM # | QTY | DESCRIPTION                       | PART #       | NOTES |
|--------|-----|-----------------------------------|--------------|-------|
| 01     | 1   | FLANGE CAP KIT                    | 028510SP     |       |
| 02     | 1   | BONDED SEAL                       | 160701SP     |       |
| 03     | 1   | CLUTCH GEAR & WAVESPRING KIT      | 050902SP     |       |
| 04     | 1   | LONG CROSS SHAFT                  | 061302SP     |       |
| 05     | 2   | SHORT CROSS SHAFT                 | 061402SP     |       |
| 06     | 1   | SIDE GEAR                         | SEE NOTE     | 2     |
| 07     | 2   | SIDE GEAR THRUST WASHER           | SEE NOTE     | 3     |
| 08     | 1   | COUNTERSUNK SCREW (PK OF 2)       | 200213SP     |       |
| 09     | 1   | RETAINING PIN SET (PK OF 4)       | 120601SP     |       |
| 10     | -   | TAPERED ROLLER BEARING            | NOT SUPPLIED |       |
| 11     | 1   | SHIM KIT                          | SHK003       |       |
| 12     | 1   | SEAL HOUSING KIT                  | 081606SP     |       |
| 13     | 1   | SEAL HOUSING O-RINGS (PK OF 2)    | 160206-2     | 1     |
| 14     | 1   | WAVESPRING                        | 150702SP     |       |
| 15     | 1   | SPLINED SIDE GEAR                 | SEE NOTE     | 2     |
| 16     | 4   | PINION GEAR                       | SEE NOTE     | 2     |
| 17     | 4   | PINION THRUST WASHER              | SEE NOTE     | 3     |
| 18     | 1   | SPIDER BLOCK                      | 070503SP     |       |
| 19     | 1   | DIFFERENTIAL CASE                 | 013110SP     |       |
| *      | 1   | BULKHEAD FITTING KIT (BANJO TYPE) | 170114       | 4     |
| *      | 1   | AIR LINE (6mm DIA X 6m LONG)      | 170314       | 4     |
| *      | 1   | SOLENOID VALVE (12V)              | 180103       |       |
| *      | 1   | SWITCH FR LOCKER                  | 180223       |       |
| *      | 1   | CABLE TIE (PK OF 25)              | 180305       |       |
| *      | 1   | OPERATING & SERVICE MANUAL        | 210200       |       |
| *      | 1   | INSTALLATION GUIDE                | 2102260      |       |

\* *Not illustrated in exploded view*

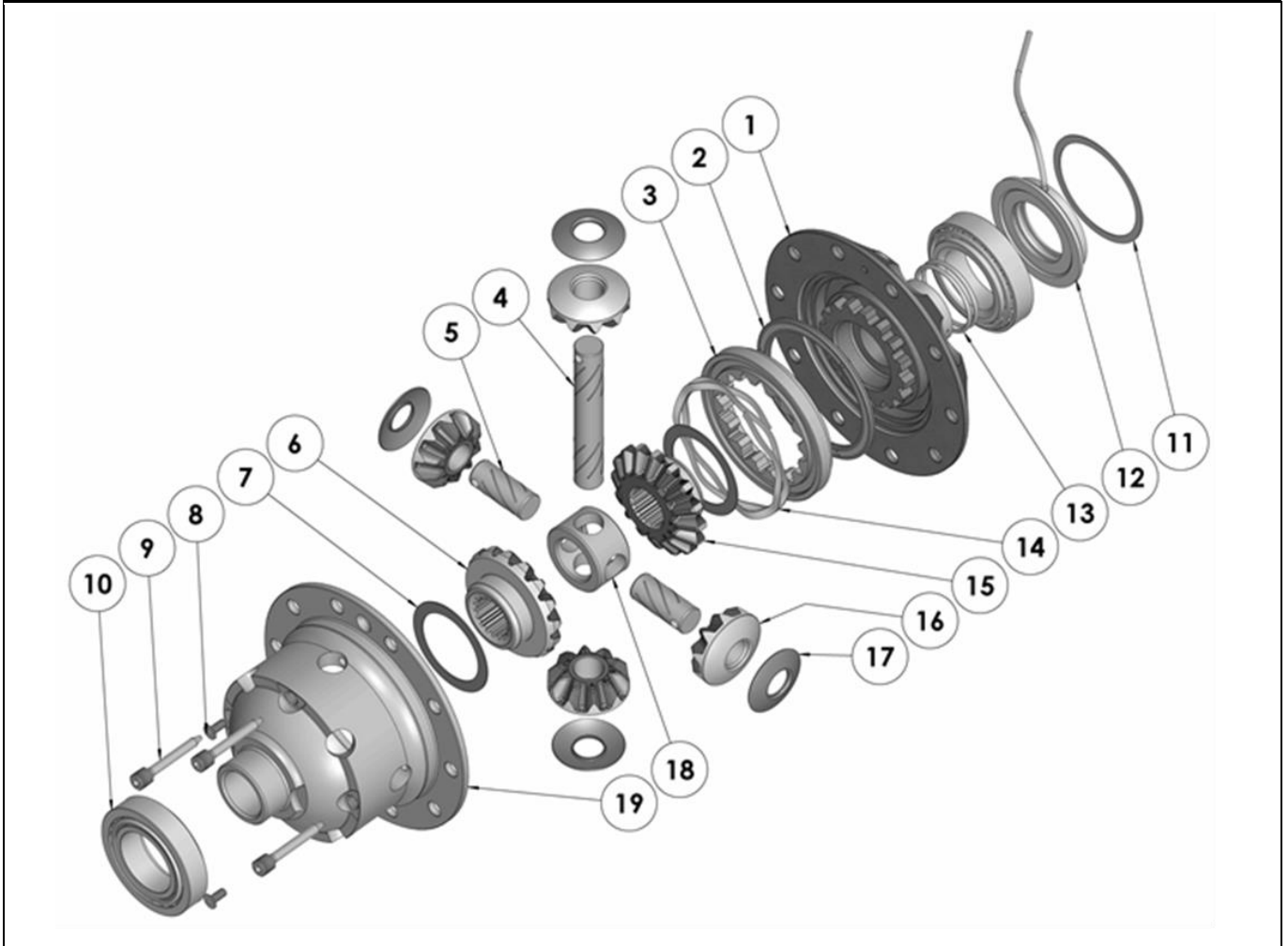
### NOTES

- 1 For replacement O-rings, use only BS130 Viton 75.
- 2 Available only as complete 6 gear set # 728J121
- 3 Available only as complete thrust washer kit #730J01
- 4 All diffs produced before serial #17070001 came with 5mm air connection system. For information contact ARB.

**RD260**

Isuzu IFS,29 SPL

### EXPLODED DIAGRAM



### SPECIFICATIONS

|                    |                            |
|--------------------|----------------------------|
| Axle Spline        | 29 tooth, Ø30.4mm [1.20"]  |
| Ratio Supported    | All                        |
| Ring Gear ID       | 121.9mm [4.80"]            |
| Ring Gear Bolts    | 10 bolts on Ø144mm [5.67"] |
| Ring Gear Torque   | 107 Nm [79 ft-lb]          |
| Backlash           | 0.15-0.20mm [0.006-0.008"] |
| Bearing Cap Torque | 98 Nm [72 ft-lb]           |

ARB Corporation Ltd • 42-44 Garden St Kilsyth VIC 3137 Australia  
ARB 4X4 Accessories USA • 720 SW 34<sup>th</sup> St Renton WA 98057 USA  
Australia & International Customer Service • +61 3 9761 6622  
North America Customer Service • Toll Free 866 293 9078  
www.arb.com.au (AUS & Int) www.arbusa.com (N. America)

