



FITTING INSTRUCTIONS

Part Numbers: **2840010**

Suited to vehicle/s: **Ford Ranger (2006-2011) / Mazda BT-50 (2006-2011)**

WARNING

NOTE THE FOLLOWING:

- ◆ This product must be installed exactly as per these instructions using only the hardware supplied.
- ◆ In the event of damage to any recovery point component, contact your nearest authorised ARB stockist. Repairs or modifications must not be attempted.
- ◆ Do not use this product for any vehicle make or model, other than those specified by ARB.
- ◆ Do not remove labels from this recovery point.
- ◆ This product or its fixing must not be modified in any way.
- ◆ The installation of this product may require the use of specialized tools and/or techniques
- ◆ It is recommended that this product is only installed by trained personnel
- ◆ These instructions are correct as at the publication date. ARB Corporation Ltd. cannot be held responsible for the impact of any changes subsequently made by the vehicle manufacturer
During installation, it is the duty of the installer to check correct operation/clearances of all components
- ◆ Work safely at all times
- ◆ Unless otherwise instructed, tighten fasteners to specified torque

ARB 4x4 ACCESSORIES

Corporate Head Office

42-44 Garden St
Kilsyth, Victoria
AUSTRALIA 3137

Tel: +61 (3) 9761 6622
Fax: +61 (3) 9761 6807

Australian enquiries
North & South American enquiries
Other international enquiries

sales@arb.com.au
sales@arbusa.com
exports@arb.com.au

GENERAL CARE AND MAINTENANCE

By choosing an ARB Recovery Point, you have bought a product that is one of the most sought after 4WD products in the world. Your recovery point is a properly engineered, reliable, quality accessory that represents excellent value. To keep your recovery point in original condition it is important to care and maintain it following these recommendations:

As part of any Pre Trip Preparation, or on an annual basis, it is recommended that a thorough visual inspection of the recovery point is carried out, making sure that all bolts and other components are torqued to the correct specification. Replace any components as necessary. This service can be performed by your local authorised ARB Stockist.

REQUIRED TOOLS FOR FITMENT OF PRODUCT:

½" Socket Set & Spanner Set
Torque wrench
Air saw, Sabre saw, Tin snips or Hack saw

HAVE AVAILABLE THESE SAFETY ITEMS WHEN FITTING PRODUCT:

Protective eyewear



Hearing protection



NOTE: 'WARNING' notes in the fitting procedure relate to OHS situations, where to avoid a potentially hazardous situation it is suggested that protective safety gear be worn or a safe work procedure be employed. If these notes and warnings are not heeded, injury may result.

FASTENER TORQUE SETTINGS:

SIZE	Torque (Nm)	Torque (lbft)
M6 (Class 8.8)	9	4
M8 (Class 8.8)	22	16
M10 (Class 8.8)	44	32
M12 (Class 8.8)	77	57
M12 (Class 10.9) (length - 120mm)	109	81

**Unless otherwise specified*

PARTS LISTING – FITTING KIT 6173169

APPLICATION	PART NO.	QTY	DESCRIPTION
RECOVERY POINT RECOVERY POINT TO CHASSIS	3758198	1	Ford Ranger / BT-50 Recovery Point
	6151527	2	Bolt M12 X 1.75 X 120 mm - Class 10.9
	6151528	2	Nyloc Nut M12 X 1.75 - Class 10.9
	6151098	5	M12 X 1.5 X 40 – Class 8.8
	6151136	1	M12 X 1.5 NUT – Class 8.8
	4581049	9	Washer Flat M12
	4584320	3	M12 washer with flat side
	4581064	5	Washer Spring M12
	6151089	1	Bolt M10 X 1.25 X 40 mm
	4581040	1	Washer Flat M10
	4581048	1	Washer Spring M10
	3194242	1	Hanger bracket
	3788053	1	Cutting Template for Stone Shield
	SAFETY	211433	1
2125484		1	Warning Sticker - Spare
211512		1	Operators Instruction Card

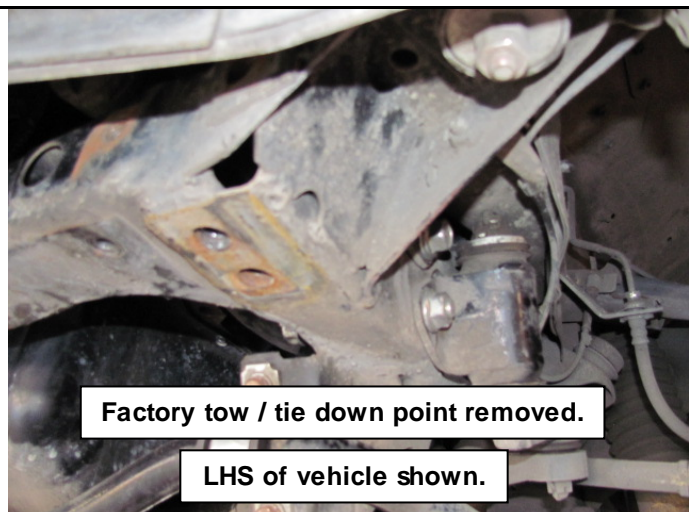
VEHICLE PREPARATION



1. Remove stone shield or under body protection.

Note:

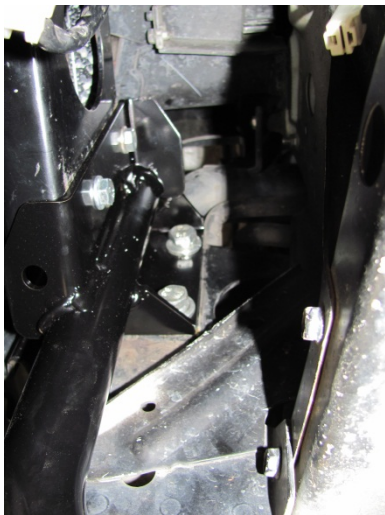
Keep all fasteners as these will be reused during step 21, 22.



Factory tow / tie down point removed.

LHS of vehicle shown.

2. Remove the front left factory tow / tie down point.



Or, if vehicle has an ARB bullbar fitted,

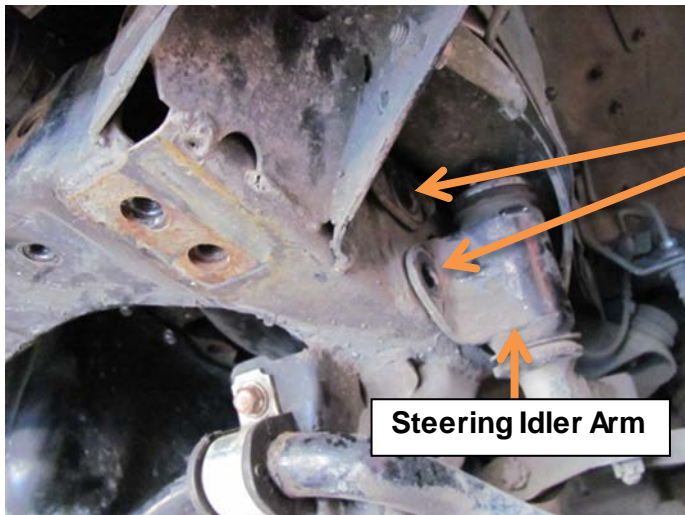
3. Remove the bullbar support brace / tie down. Remove bolts retaining the lower section of the brace first followed by the four bolts retaining the top section (*shown in figure*).

NOTE:

The lower left stone shield on the bullbar can be removed if greater access to this section is required.

IMPORTANT:

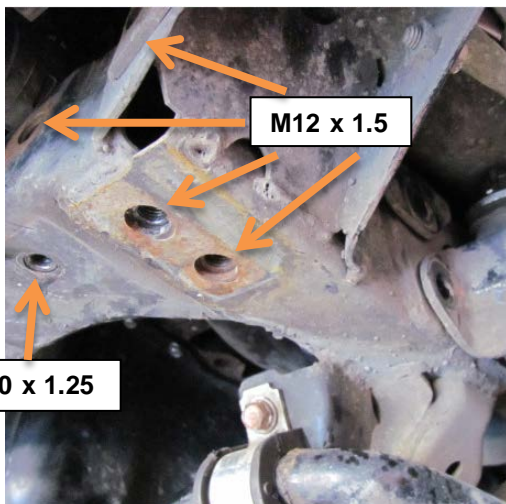
Be careful to retain all of these nuts and bolts as they will be used later.



4. Remove the two steering idler arm bolts.

NOTE:

A long breaker bar may be required.



5. Check the captive nuts inside the chassis for wear and damage.

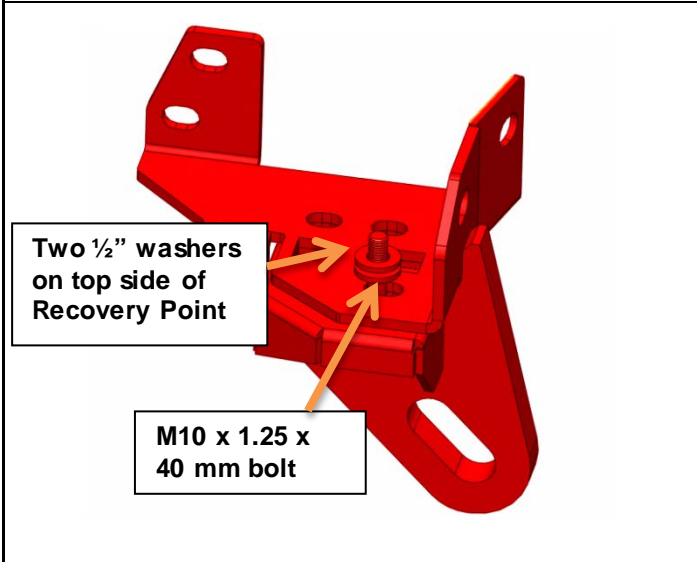
Inspect chassis for any damage or deformation.

The factory tie down points may have caused damage to the chassis if used for vehicle recovery.

IMPORTANT:

If either is visible, consult your nearest ARB service centre for advice.

FITTING PROCEDURE

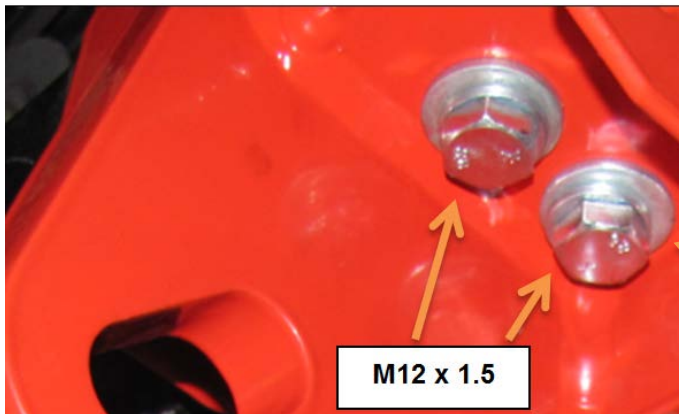


6. Place the M10 x 1.25 (FINE THREAD) x 40 mm bolt, spring washer & flat washer through the bottom hole as shown.

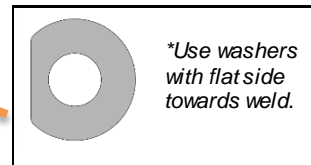
Place two ½" washers on the top side of the recovery point and finger tighten bolt to chassis. Keep holding the recovery point until *step 7* has been completed.

IMPORTANT:

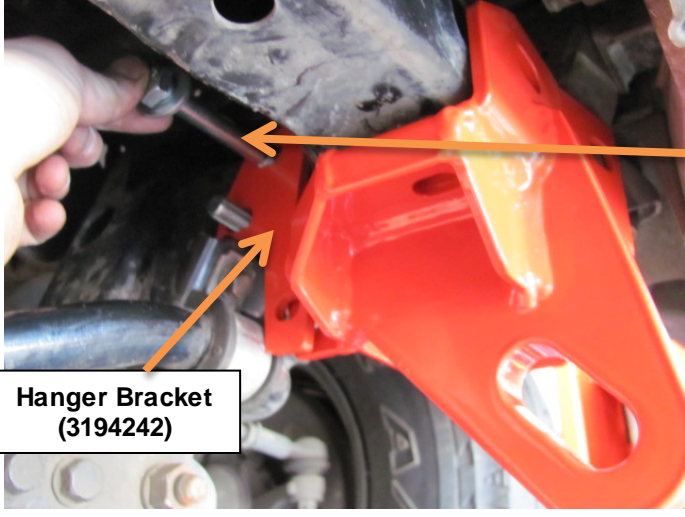

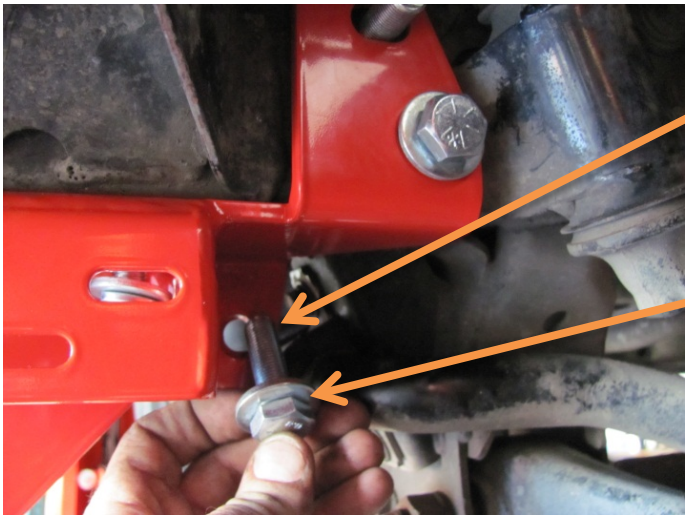

All bolts must be installed finger tight before any of them are torqued to their appropriate specifications.



7. While holding the recovery point firmly against the chassis, finger tighten an M12 x 1.5 x 40 mm bolt, spring washer & flat washer* in to the two remaining holes on the bottom of the chassis.



8. Fit the lower rear steering idler bolt & flat washer (M12 x 120 - Class 10.9) into place as shown.

 <p data-bbox="119 560 343 638">Hanger Bracket (3194242)</p>	<p data-bbox="821 201 1460 403">9. Place the hanger bracket on the inside of the chassis. Fit the top bolt (M12 x 120 – Class 10.9) & flat washer through the hanger bracket from the inside of the chassis through to the outside.</p> <p data-bbox="821 436 1412 504">10. Finger tighten an M12 Nyloc nut (Class 10.9) & flat washer to each steering bolt.</p>
	<p data-bbox="821 817 1500 918">11. Finger tighten M12 x 1.5 x 40 mm bolts, spring & flat washers in to both holes in the front of the chassis as shown.</p>
	<p data-bbox="821 1422 1484 1523">12. Place one M12 x 1.5 x 40 mm bolt with a flat washer* fitted through the recovery point and the hanger bracket.</p> <div data-bbox="1005 1601 1316 1758" style="border: 1px solid black; padding: 5px; margin: 10px 0;">  <p data-bbox="1157 1624 1292 1702"><i>*Use washer with flat side towards weld.</i></p> </div> <p data-bbox="821 1803 1492 1870">13. Place a flat & spring washer and finger tighten the M12 x 1.5 nut.</p>



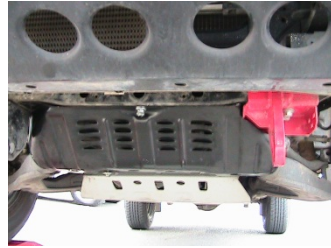
14. Check the position of the recovery point. Check that the front face and the bottom of the recovery point is resting on the chassis. Check that the rear right of the recovery point is pushed against the steering idler arm bracket.
15. Now begin with the M10 bolt (*shown*) and tighten to the appropriate torque given on *page 2*.



16. Torque the two rear bolts (*M12 x 120 – Class 10.9*) to 109 Nm (*81 lbft*).
- IMPORTANT:**
- These bolts are of a higher class than 8.8. They need to be torqued to a higher value as specified on page 2.*
- DO NOT use this torque setting for any of the other M12 bolts supplied with this kit.**
17. Torque the bottom bolts (*shown in steps 6 & 7*) before torqueing the two bolts on the front face (*step 11*).
 18. Torque the bolt connecting the recovery point to the hanger bracket (*step 12*) next.



19. All bolts torqued to specifications given on *page 2*.



If **ARB Under Body Protection** was removed in *step 1*, skip to *step 22*.

20. If the standard stone shield was removed during *step 1*.
Cut the template out from *page 11* and attach to factory stone shield. Use the template to cut the front left corner of the *stone shield* as shown or until a minimum clearance of 10 mm is achieved from the recovery point. Remove sharp edges and paint with colour matched paint.
21. Refit the stone shield in reverse to removal in *step 1*.

UNDER BODY PROTECTION

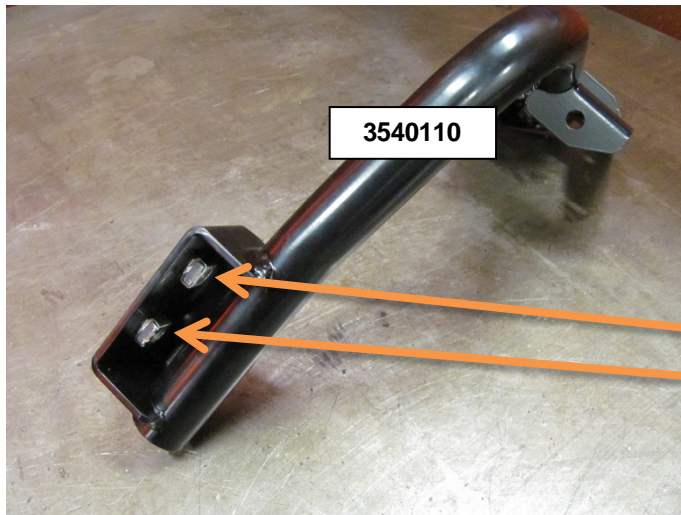


22. Refit ARB Under Body Protection in reverse order to removal in *step 1*.



23. Final product shown with ARB under body protection kit, *sold separately*.

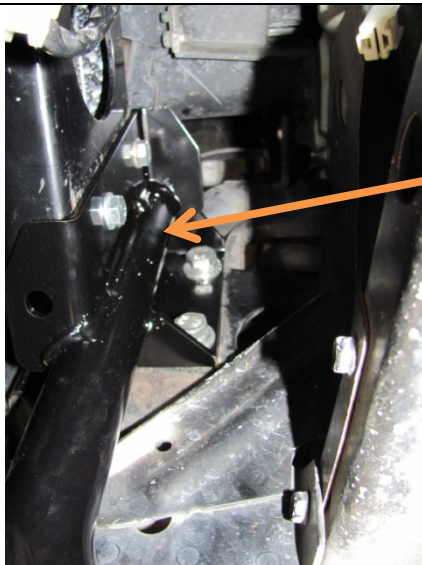
ARB BULLBAR BRACE REPLACEMENT
(ONLY APPLICABLE IF ARB BULLBAR BRACE IS DIFFERENT FROM ONE BELOW)



IMPORTANT:

If brace removed does not match part shown. Part # 3540110 is required.

24. Insert the two *M10 x 1.5* cage nuts in to the square cut outs on the inside of the bottom bracket on the replacement bull bar brace.



25. Bolt the upper brackets of the bullbar to chassis brace in reverse order to removal using the same nuts and bolts as removed in *step 3*.



26. Bolt the lower bracket to the recovery point using *M10 x 1.5 x 30 mm* bolts, *spring & flat washer*.



Finished product fitted to vehicle.

Final product shown with ARB under body protection kit, *sold separately*.